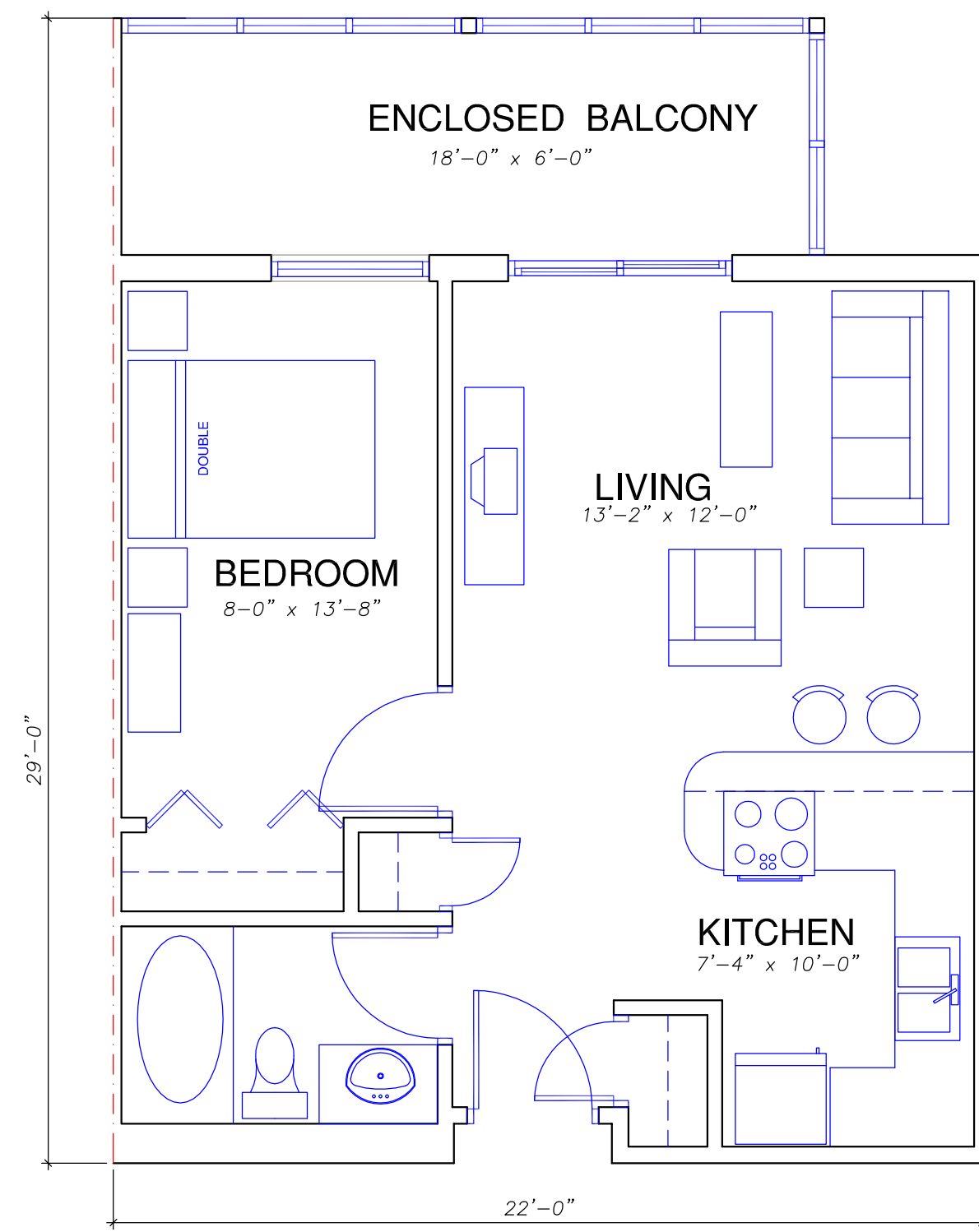


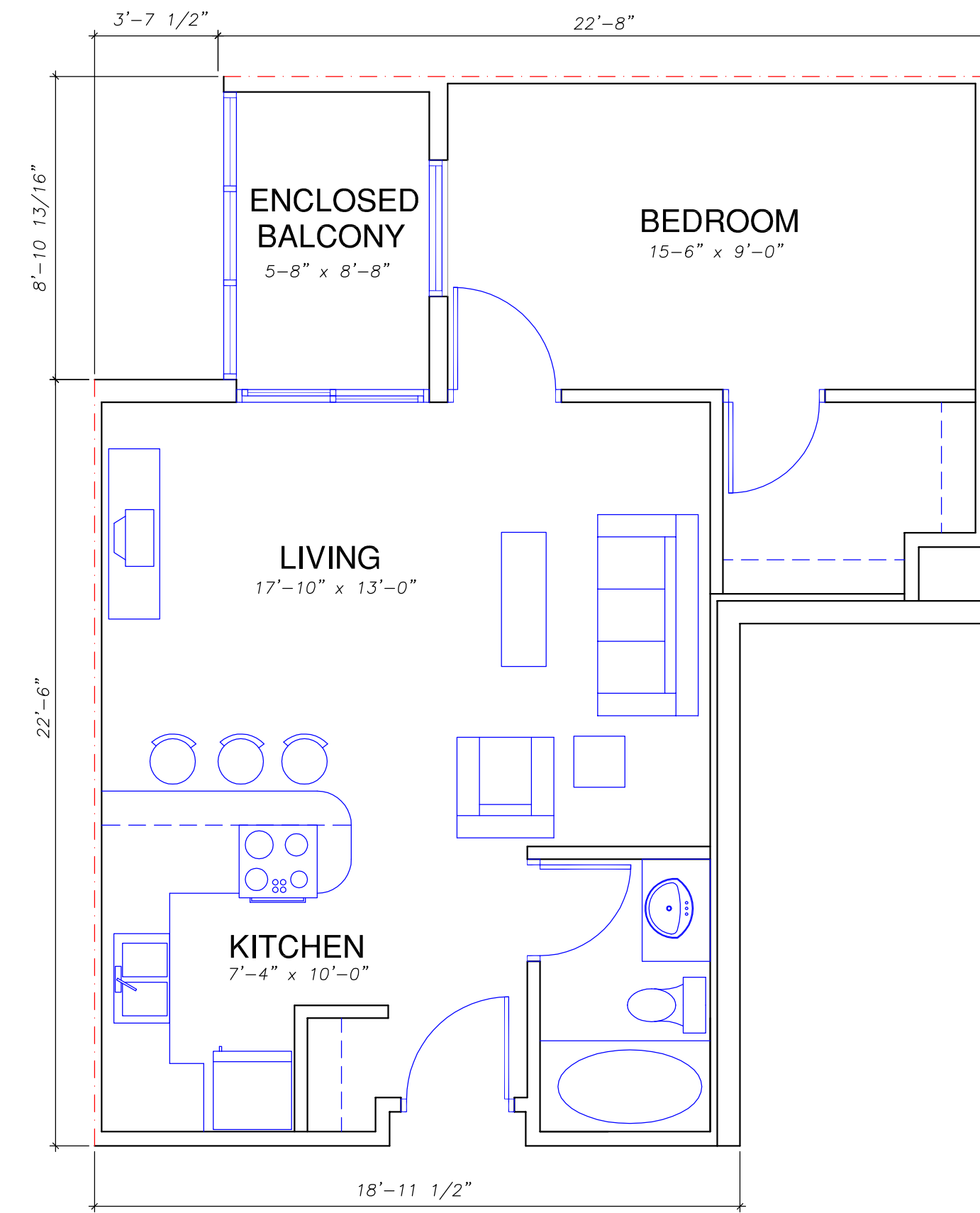
1 BEDROOM - Type 1a

UNIT AREA - 614 sq.ft.



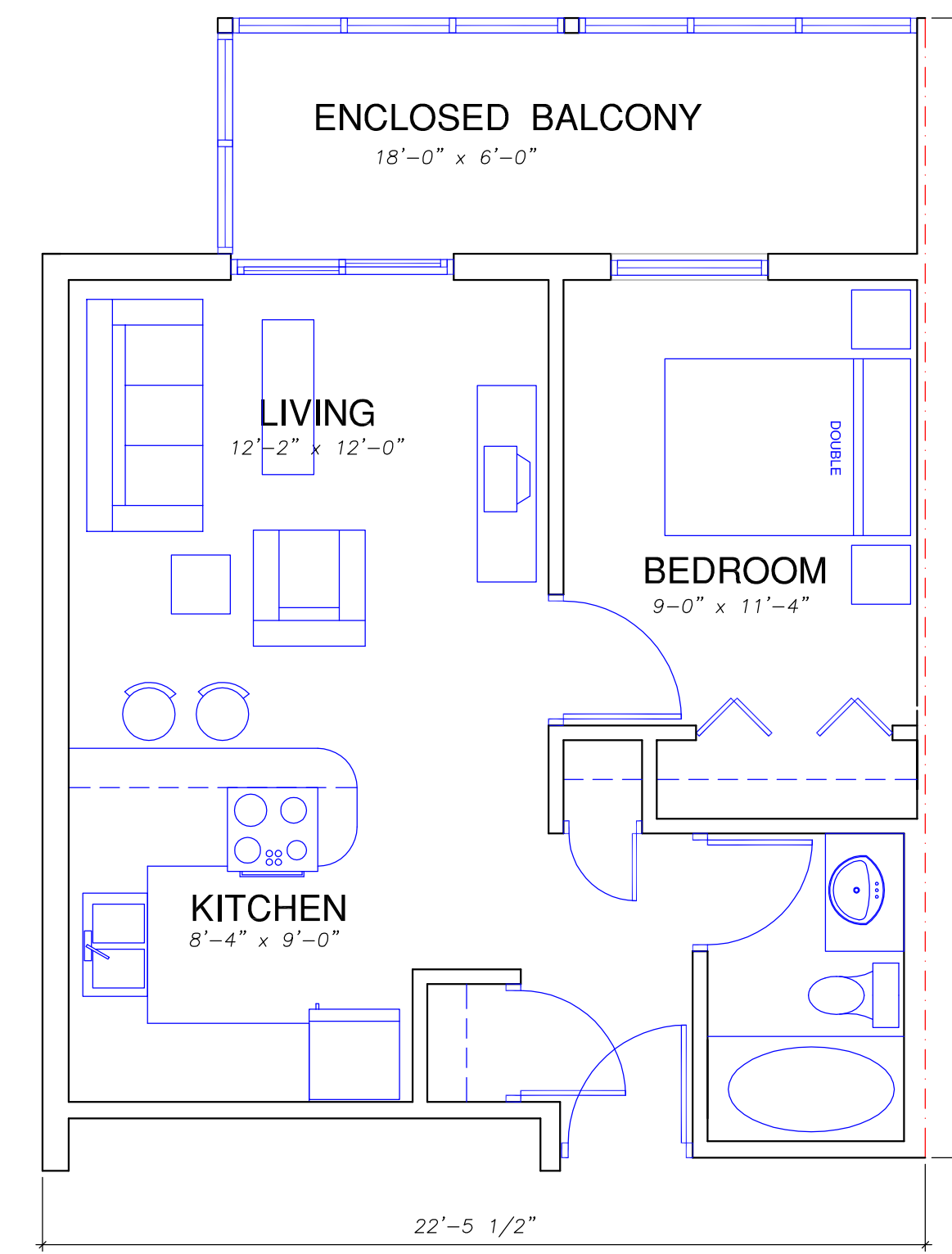
1 BEDROOM - Type 1b

UNIT AREA - 691 sq.ft.



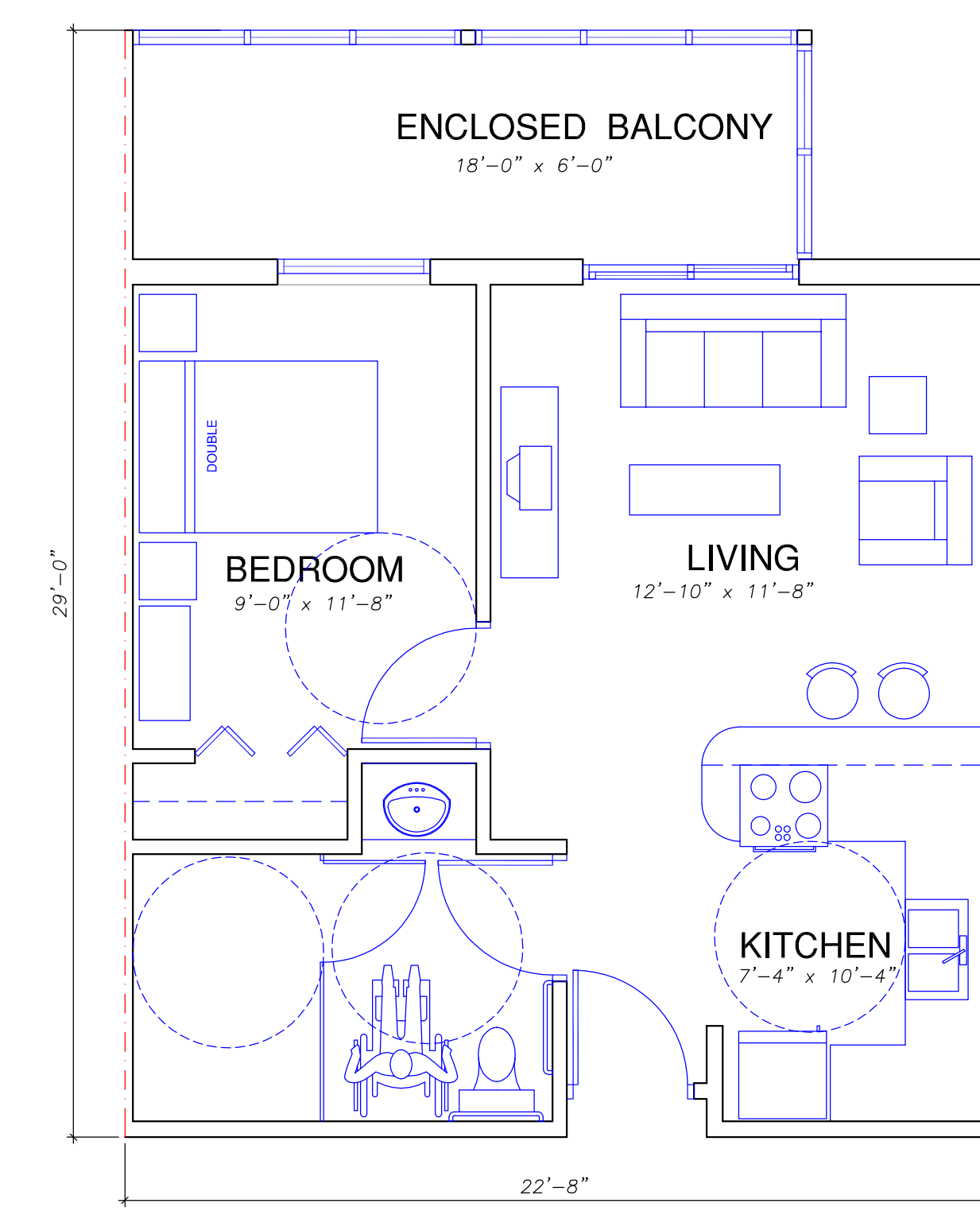
1 BEDROOM - Type 1s

UNIT AREA - 615 sq.ft.



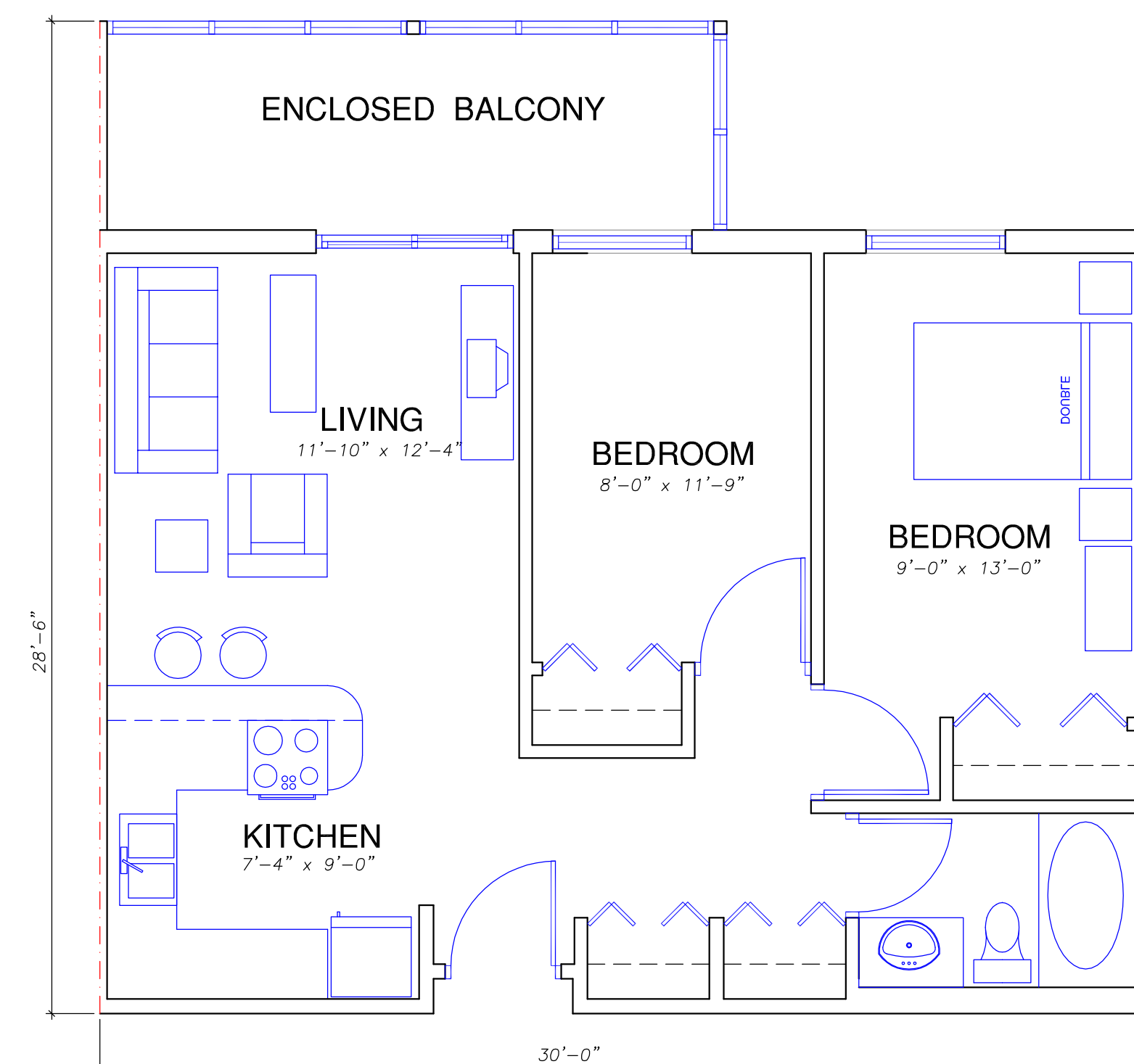
1 BEDROOM hc

UNIT AREA - 633 sq.ft.



2 BEDROOM - Type 2a

UNIT AREA - 747 sq.ft.



HANMER SENIORS COMPLEX

6166 HIGHWAY 69 NORTH, HANMER, ONTARIO

FOR

CAISSE POPULAIRE ST. JACQUES DE HANMER
4477 AVENUE NOTRE-DAME, HANMER, ONTARIO

ZEBROSKI
ASSOCIATES LTD
ARCHITECT

HAMILTON, ONTARIO, CANADA

E-MAIL: g09@zebroski.com WEB SITE: www.zebroski.com
TEL: 905-575-9333 FAX: 905-659-2447

NO.	REVISION	DATE



DATE MAY 2007	SET No.
PLOT DATE 19 JAN 09	DWG. No. 0530
DRAWN BY G.D. S.Z. G.Z.	P71
ISSUED	